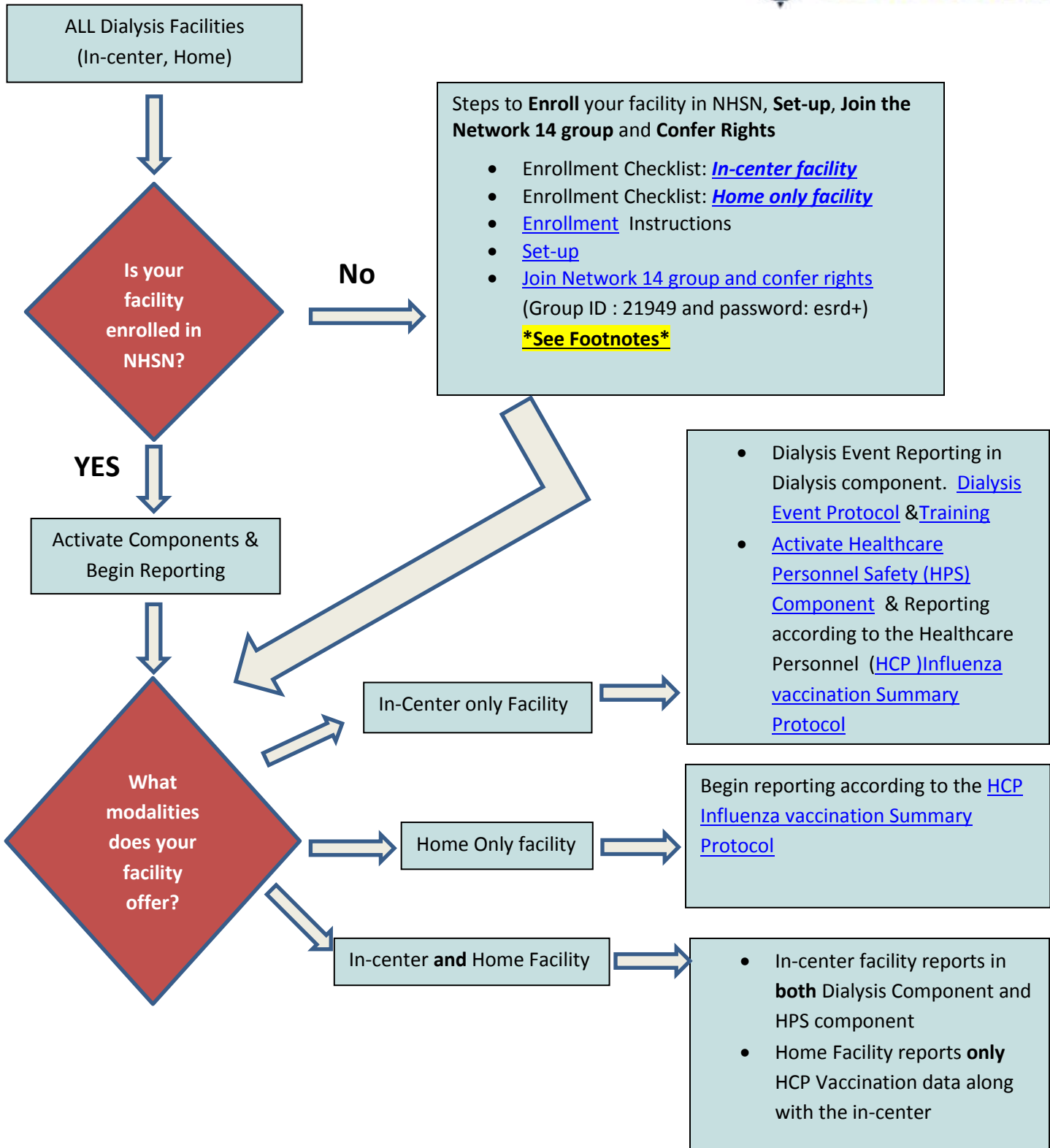


NHSN Enrollment and Reporting Decision Tree



FOOTNOTE:

- 1) If your facility does not share a CCN with any In-center Outpatient Hemodialysis facility (i.e. Home Only Facility), then enroll your facility in NHSN and activate the HPS Component and report HCP Influenza vaccination data only.
- 2) If your **home HD/PD** facility shares a CCN with an In-center Outpatient Hemodialysis facility that is already enrolled in NHSN, do not enroll your **home HD/PD** facility separately. Instead report your HCP influenza vaccination data along with the in-center facility's HCP influenza vaccination data.