

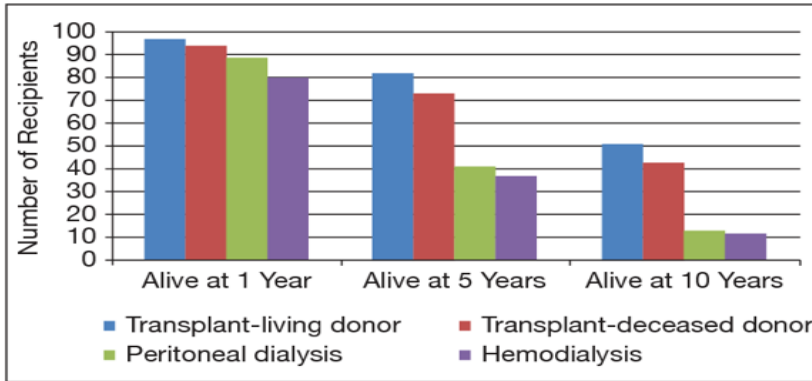


# Going Back to You!



## Promoting Home Dialysis and Transplant February, 2020

Did you know you might live longer with a Kidney Transplant than staying on dialysis?



5 year survival rate of dialysis patients is only half of transplant. In 10 years, it will decrease to only 1/4 (deceased donor) or 1/5 (living donor) compare to Transplant.

Did you know there is a different classification Kidney donation and transplant candidates which can significantly affect your waiting time for kidney transplant?

- Each kidney offered for a transplant has a Kidney Donor Profile Index (KDPI) score
- Each kidney candidate gets an individual Estimated Post-Transplant Survival (EPTS) score

### What goes into a KDPI score?

The KDPI is calculated based on facts about the donor that affect how long the kidney is likely to function. These factors include:

- Age
- Height
- Weight
- Ethnicity
- Whether the donor died due to loss of heart function or loss of brain function
- Stroke as cause of death
- History of high blood pressure
- History of diabetes
- Exposure to the hepatitis C virus
- Serum creatinine (a measure of kidney function)

### What goes into an EPTS score?

The EPTS is calculated based on facts about the candidate that affect how long you are likely to need a kidney.

These factors include:

- Age
- Length of time spent on dialysis
- Having received a previous transplant (of any organ)
- Current diagnosis of diabetes

- Accepting a KDPI that matches your EPTS might shorten your waiting time!

- ❖ Ask you team for Transplant financial resources to be prepared
- ❖ Watch the video of Transplant Financial Coordinator to learn what to expect.

Ask any questions of your treatment choice to “Modality Expert Team (MET)” today!

Project Lead		Patient Family Rep.	
Social Worker		Patient Family Rep.	
Star Patient Care Tech		Home Champion	
Star Patient Care Tech		Transplant Champion	

