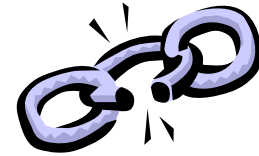


NetLink



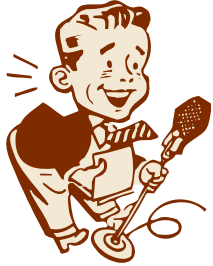
Stay Connected with Network 14!

August 2009

Keep up with what's *new*, what's *due* & what's *upcoming*

End Stage Renal Disease Network of Texas, Inc. (#14)

4040 McEwen Rd., Suite 350 Dallas, Texas 75244 ♦ 972-503-3215 phone ♦ 972-503-3219 fax ♦ www.esrdnetwork.org



PLEASE POST FOR ALL STAFF! Important information from Network 14

The Lone Star Bulletin.....

is the professional newsletter for Network 14. In order to reach more renal professionals the Network staff delivers this highly educational document twice a year through the Network website. To access the current and/or previous editions log on to our website at www.esrdnetwork.org, click on ⇨ "Our Network", ⇨ "Newsletters", ⇨ "Professional Newsletters".

2008 ESRD Network of Texas Annual Report....

In compliance with the CMS Contract Number HHSM-500-2006-NW014C, the ESRD Network of Texas has completed and received CMS approval of its 2008 Annual Report.

You may access a copy of this report from our website at www.esrdnetwork.org. Any comments on the report or to request a hard copy may be directed to info@nw14.esrd.net.

Phase II of CrownWeb begins August 3, 2009.

Network 14 has recruited ten facilities to participate in this testing phase. We are excited to explore this new method of national ESRD data exchange and plan to educate all non-participating facilities with up to date information regarding CrownWeb as we receive it.

ID Numbers for Purple Wristbands: As we inch closer to hurricane season, we encourage all facilities to proactively request, obtain, and organize their patient ID Num's so that the Network is not overwhelmed with a high volume of last minute requests resulting in delays of processing. Keep in mind that if a patient is new to dialysis and has not had a 2728 completed or has not been reported on your facility PAR, then the Network will not have an ID Num issued for that patient until one of the above has occurred. A simplified way to request this information is to have your **Facility Census** faxed to you.

****Just a reminder: PLEASE DO NOT EMAIL ANY PATIENT-SPECIFIC INFORMATION (NAME, DATE OF BIRTH, SOCIAL SECURITY NUMBER, ETC.) TO THE NETWORK #14 OFFICE.***

As always, we thank all of you for your hard work and dedication to our Texas ESRD patients!!

If you need to call the Network office but don't know which Network staff member you need to speak with - download a staff listing with job descriptions and phone numbers from our website at www.esrdnetwork.org. Under the "Our Network" click on "who we are", then on "staff listing". Feel free to copy and post beside all facility phones.

Phosphorous Management Quality Improvement Project

ESRD Network #14

Phosphorous Management QAPI Webinar

Thursday - July 30, 2009

2:00pm – 3:00pm CST

Donald Molony, MD - Professor of Medicine

University of TX Health Sciences Center, Houston

NW #14 Medical Review Board Vice-Chair

Bobbie Knotek, BSN, RN, CNN

NW #14 Quality Improvement Director

Directions for Webinar Registration - Please register for the Webinar by 3:00 PM on Tuesday, July 28, 2009 to give the Registration site time to process your registration:

- Open Internet Explorer.
- Go to <https://ifmcevents.webex.com>.
- Locate the name of the event: **Phosphorous Quality Improvement Project**
- Note – The time on the web site is listed as 3:00pm EST (2:00pm CST).
- Click on the Enroll button to the right of the event title.
- Enter the required information.
Immediately after submitting required information, you will receive an email informing you that your enrollment is pending.
- To maximize the number of facilities that can participate on the Webinar and prevent multiple Webinar registrations from a single facility, your enrollment must be forwarded to NW QI staff for approval. If your enrollment is approved, you will receive an email containing detailed instructions for joining the meeting. If your enrollment is declined due to multiple Webinar registrations from your facility, you will receive an email explaining the reasons for your declined enrollment.
- If you need help enrolling in or joining this event, please contact the IFMC WebEx Helpline at (515) 440-8555.

Please note:

- *Facilities registering for Webinar will be limited to (1) phone line per facility*
- *Webinar will be recorded for future viewing by your nurses and PCTs*

Wet Transducers



Recently, multiple deficiencies have been found related to the proper handling of blood contaminated external transducers. Please be sure to review the procedure for handling this situation with all facility clinical staff.

Surveyor

Sighting

- If the external transducer gets wet with blood or fluid during a dialysis treatment - it **MUST** be changed immediately!
- The side of the external transducer protector that faces the machine should be inspected for visible fluid.
- If fluid or blood is visible on the side of the transducer protector that faces the machine, the machine must be opened by qualified personnel after the dialysis treatment to inspect the internal transducer for contamination and for possible blood contamination of the internal pressure tubing set and pressure sensing port.
HINT: Frequent blood line pressure alarms or frequent requirements for adjustment of the blood level in the drip chamber can be indicators of contamination of the internal transducer filter. (CMS CfC – Tag V120)
- The internal transducer must be checked **before** the next patient is placed on the machine.

2009 Dialysis Facility Reports Will Arrive at YOUR Facility

by July 30th (via UPS/Signature Required)

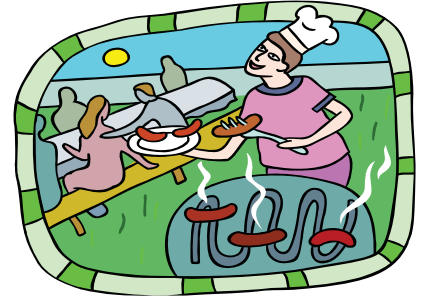
Did You Know?

- *When DSHS surveyors enter a facility for a survey, they ask for a copy of the facility's most current DFR Report*
- *DSHS surveyors use DFR data **to select facilities for survey***
- *The comment period for your facility to report DFR data discrepancies to CMS and DSHS ends September 8, 2009*
- *You can download extra copies of your DFR Report from www.dialysisreports.org using the facility pass-code that will arrive with your DFR this month (If you request copies from the NW, it will cost your facility \$50.00/copy)*
- *The “**Facility Report Card**” was designed to include DFR data (SMR, STR, SHR, etc.)*

Please share
DFR results
with your
patients!



Network 14 August 2009 Calendar



Sun	Mon	Tue	Wed	Thu	Fri	Sat
						1
2	3 KCER Disaster Meeting	4	5	6	7 July PAR's due	8
9	10  Non-LDO July FF data due EMSystem update due	11	12	13	14	15
16	17	18	19	20	21 Patient Event Validations & Missing Forms Due	22
23	24	25	26	27 Missing Forms Sent	28	29
30	31 PO4 Focus Facility Documentation Due					
AAKP National Convention: August 28-31 in Washington D.C.						



PAR TIP:
Please contact the Network for information regarding Patient Transplant dates



57789

ESRD NETWORK OF TEXAS, INC. AUGUST 2009 NETLINK EVALUATION

- The information learned will be used to improve the quality of our monthly newsletter
- **Survey completion is voluntary, but much appreciated!**
- Identity of respondents if provided, will be kept confidential
- Estimated completion time for this survey is less than 5 minutes

FAX to 972-996-0396 DO NOT use any other fax number.

Choose only 1 bubble unless designated otherwise. Completely fill in the bubble. (for example)

- Discipline:**
- | | |
|----------------------------------------|-------------------------------------|
| <input type="radio"/> Physician | <input type="radio"/> RD |
| <input type="radio"/> RN | <input type="radio"/> PCT |
| <input type="radio"/> RN-Administrator | <input type="radio"/> Administrator |
| <input type="radio"/> LVN | <input type="radio"/> Other |
| <input type="radio"/> SW | |

1. Receipt of the Monthly NetLink

- I did receive a copy of the monthly NetLink
- I did not receive a copy of the monthly NetLink
- I know how to access a copy of the monthly NetLink from the Network website

2. Format of the monthly NetLink - The monthly NetLink is too visually:

- Too overwhelming Boring Acceptable

3. Content of the monthly NetLink

- | | | | |
|---------------------------------------------|---------------------------|--------------------------|---------------------------|
| Helpful to me professionally | <input type="radio"/> Yes | <input type="radio"/> No | <input type="radio"/> N/A |
| Current information and resources included | <input type="radio"/> Yes | <input type="radio"/> No | <input type="radio"/> N/A |
| New information and resources for me to use | <input type="radio"/> Yes | <input type="radio"/> No | <input type="radio"/> N/A |

4. What future topics would you like to see covered in the monthly NetLink?

- | | |
|-------------------------------------------------------|-----------------------------------------------------------------|
| <input type="radio"/> Tips on CrownWeb | <input type="radio"/> Tips for dealing with disruptive patients |
| <input type="radio"/> Modality options | <input type="radio"/> End of Life/Advance Care Planning |
| <input type="radio"/> Website navigation | <input type="radio"/> Improving quality of life for patients |
| <input type="radio"/> EMSystem navigation | <input type="radio"/> Tips to improve quality of care |
| <input type="radio"/> Tips to improve Vascular Access | |

5. The information I use the most from NetLink is:

- Articles Calendar

6. If you have any suggestions regarding how we could improve the monthly NetLink, please email Geli Brown at gbrown@nw14.esrd.net

THANK YOU for your input!